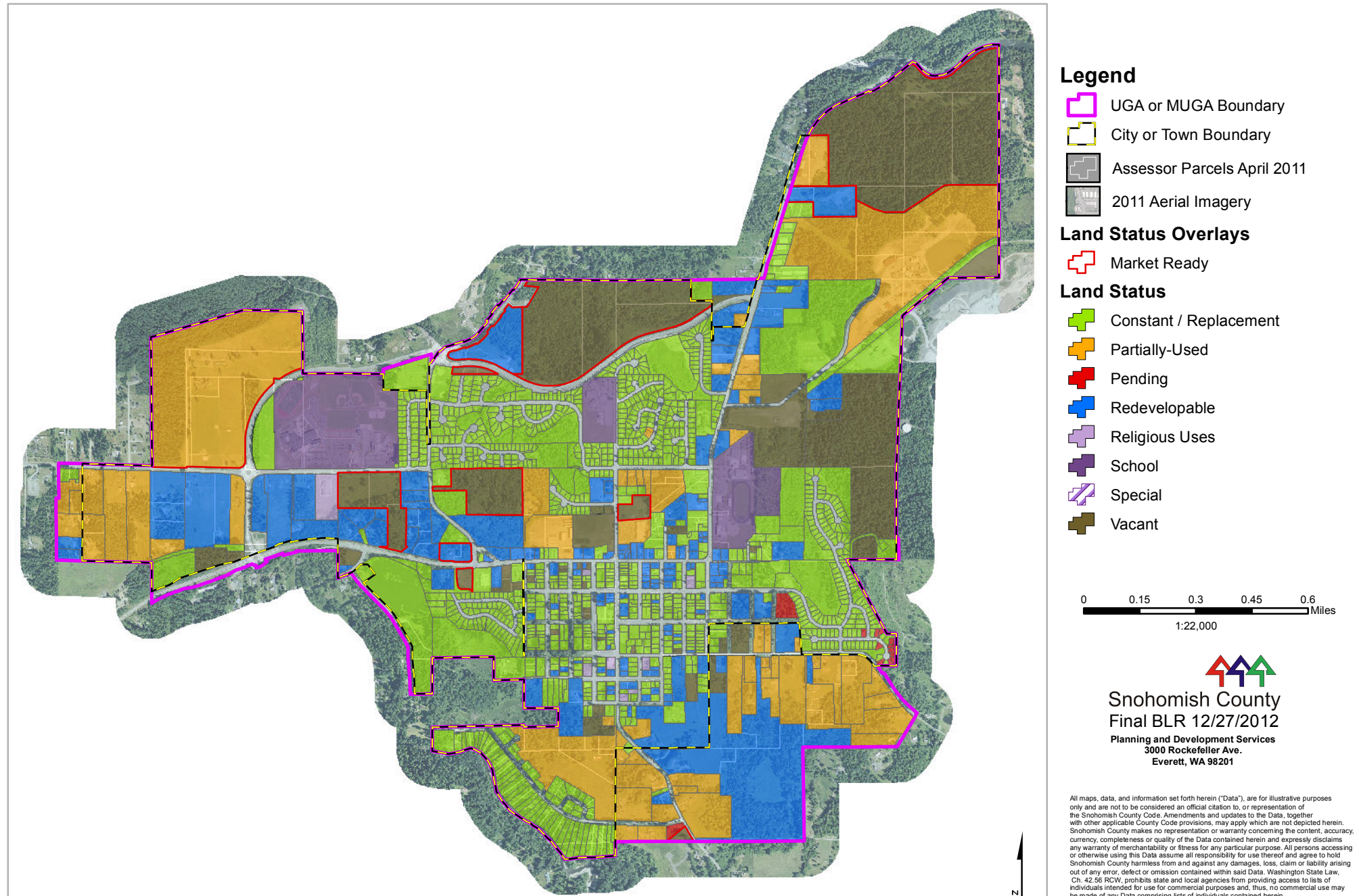
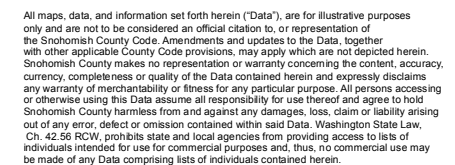


Land Status

Granite Falls UGA

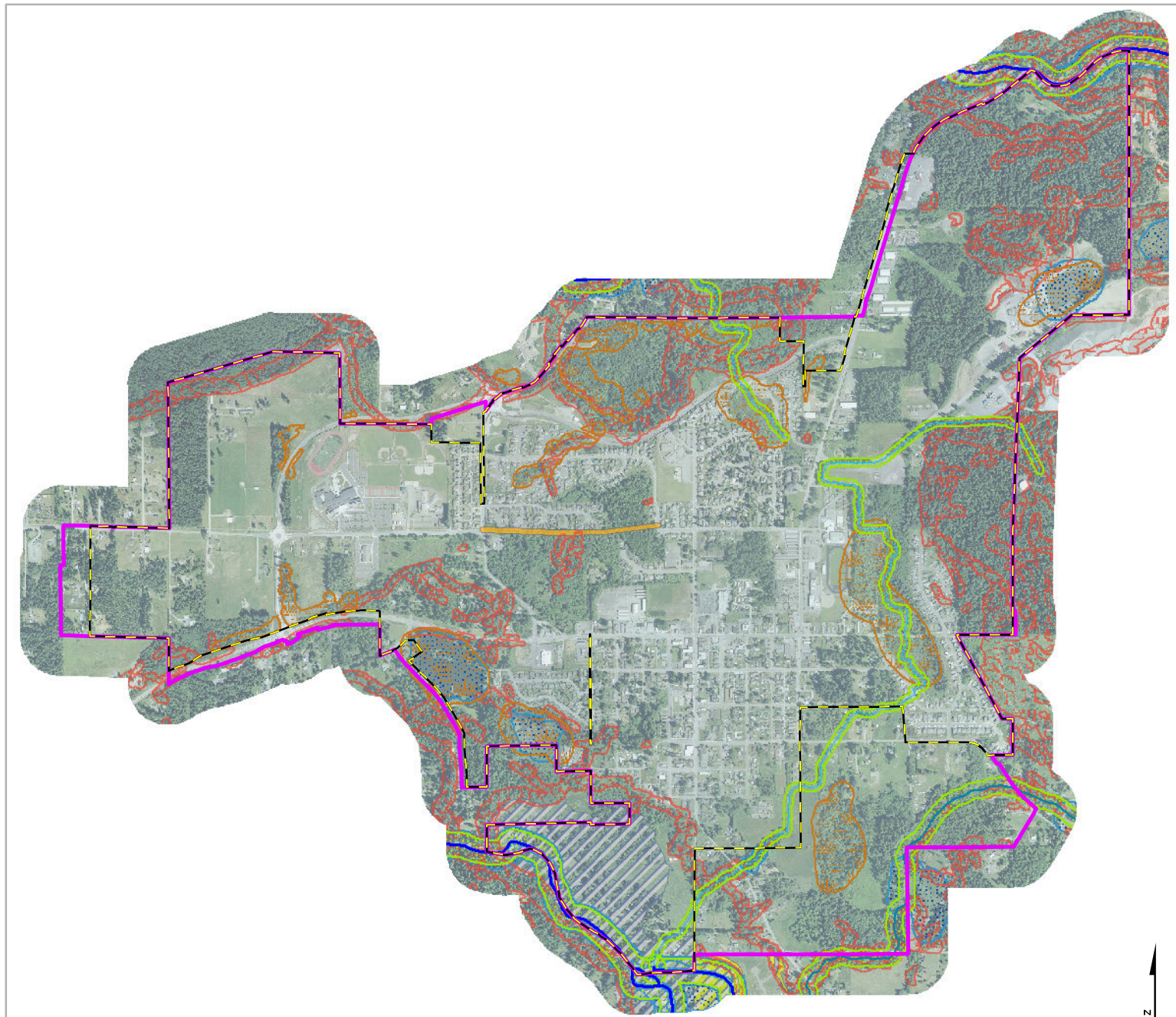


Granite Falls UGA



Critical Areas and Easements

Granite Falls UGA



Legend

UGA Boundary

City Boundary

Stream Classification

S

F

Np

Ns

U

X

Stream Buffers as Modeled

Wetland w/110ft Buffer

Slope >33% w/25ft Buffer

Waterbody

Inside 100-year floodplain

Utility or NGPA Easement

Future Arterial

2011 Aerial Imagery

0 0.15 0.3 0.45 0.6 Miles
1:22,000



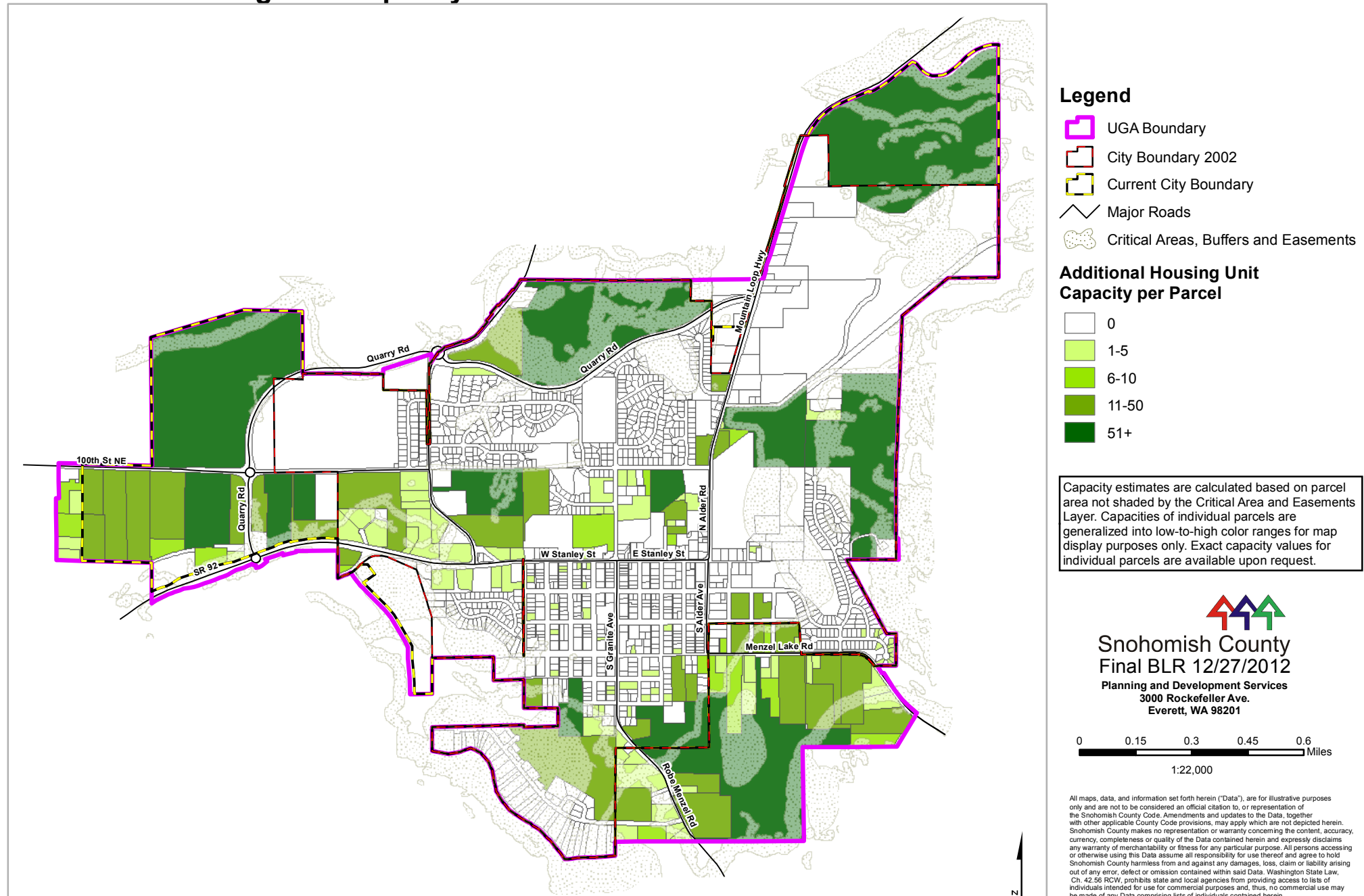
Snohomish County
Final BLR 12/27/2012

Planning and Development Services
3000 Rockefeller Ave.
Everett, WA 98201

All maps, data, and information set forth herein ("Data"), are for illustrative purposes only and are not to be considered an official citation to, or representation of the Snohomish County Code. Amendments and updates to the Data, together with other applicable County Code provisions, may apply which are not depicted herein. Snohomish County makes no representation or warranty concerning the content, accuracy, currency, completeness or quality of the Data contained herein and expressly disclaims any warranty of merchantability or fitness for any particular purpose. All persons accessing or otherwise using this Data assume all responsibility for use thereof and agree to hold Snohomish County harmless from and against any damages, loss, claim or liability arising out of any error, defect or omission contained within said Data. Washington State Law, Ch. 42.56 RCW, prohibits state and local agencies from providing access to lists of individuals intended for use for commercial purposes and, thus, no commercial use may be made of any Data comprising lists of individuals contained herein.

Additional Housing Unit Capacity

Granite Falls UGA



Additional Employment Capacity

Granite Falls UGA

