





## Legend

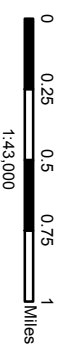
-  UGA or MUGA Boundary
-  City or Town Boundary
-  Assessor's Parcels April 2011
-  2011 Aerial Imagery

## Land Status Overlays

-  Market Ready

## Land Status

-  Constant / Replacement
-  Partially-Used
-  Pending
-  Redevelopable
-  Religious Uses
-  School
-  Special
-  Vacant



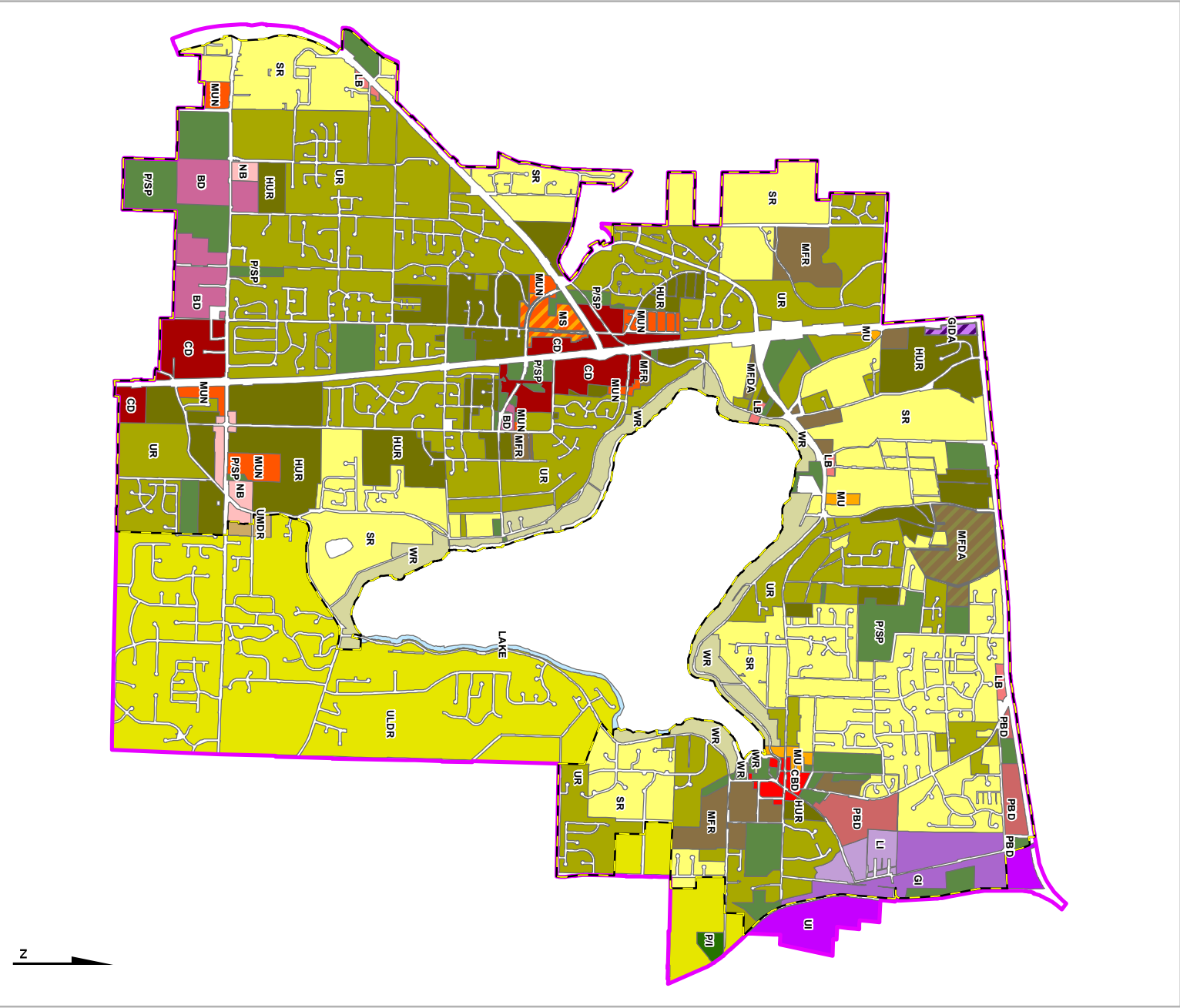
  
**Snohomish County**  
 Final BLR 12/27/2012  
 Planning and Development Services  
 3000 Rockefeller Ave.  
 Everett, WA 98201

All maps, data, and information set forth herein ("Data") are for illustrative purposes only and are not intended to be used for any legal or financial purposes. The Snohomish County Code Amendments and updates to the Data, together with other applicable County Code provisions, may apply which are not depicted herein. The Data is provided as is, without warranty of any kind, and the user assumes all responsibility for its use. Snohomish County does not warrant the accuracy, completeness, or quality of the Data contained herein and expressly disclaims any warranty of merchantability or fitness for any particular purpose. All persons accessing Snohomish County's information system and applying any damages, loss, claim or liability arising out of any error, defect or omission contained within said Data, Washington State Law, Chapter 42.56 RCW, prohibits state and local agencies from providing access to data or information that is not publicly available. Snohomish County is not responsible for any be made of any Data comprising lists of individuals contained herein.



Zoning / Future Land Use

Lake Stevens UGA



At map, data, and information set forth herein ("Data"), are for illustrative purposes only and are not to be considered an official citation to, or representation of, the Snohomish County Code. Amendments and updates to the Data, together with other applicable County Code provisions, may apply which are not depicted herein. Snohomish County makes no representation or warranty concerning the content, accuracy, currency, completeness or quality of the Data contained herein and expressly disclaims any warranty of merchantability or fitness for any particular purpose. All persons accessing the Data do so at their own risk. Snohomish County hereby disclaims any and all liability arising out of any error, defect or omission contained within said Data. Washington State Law, Ch. 42.56 RCW, prohibits state and local agencies from providing access to lists of individuals intended for use for commercial purposes and, thus, no commercial use may be made of any Data comprising lists of individuals contained herein.

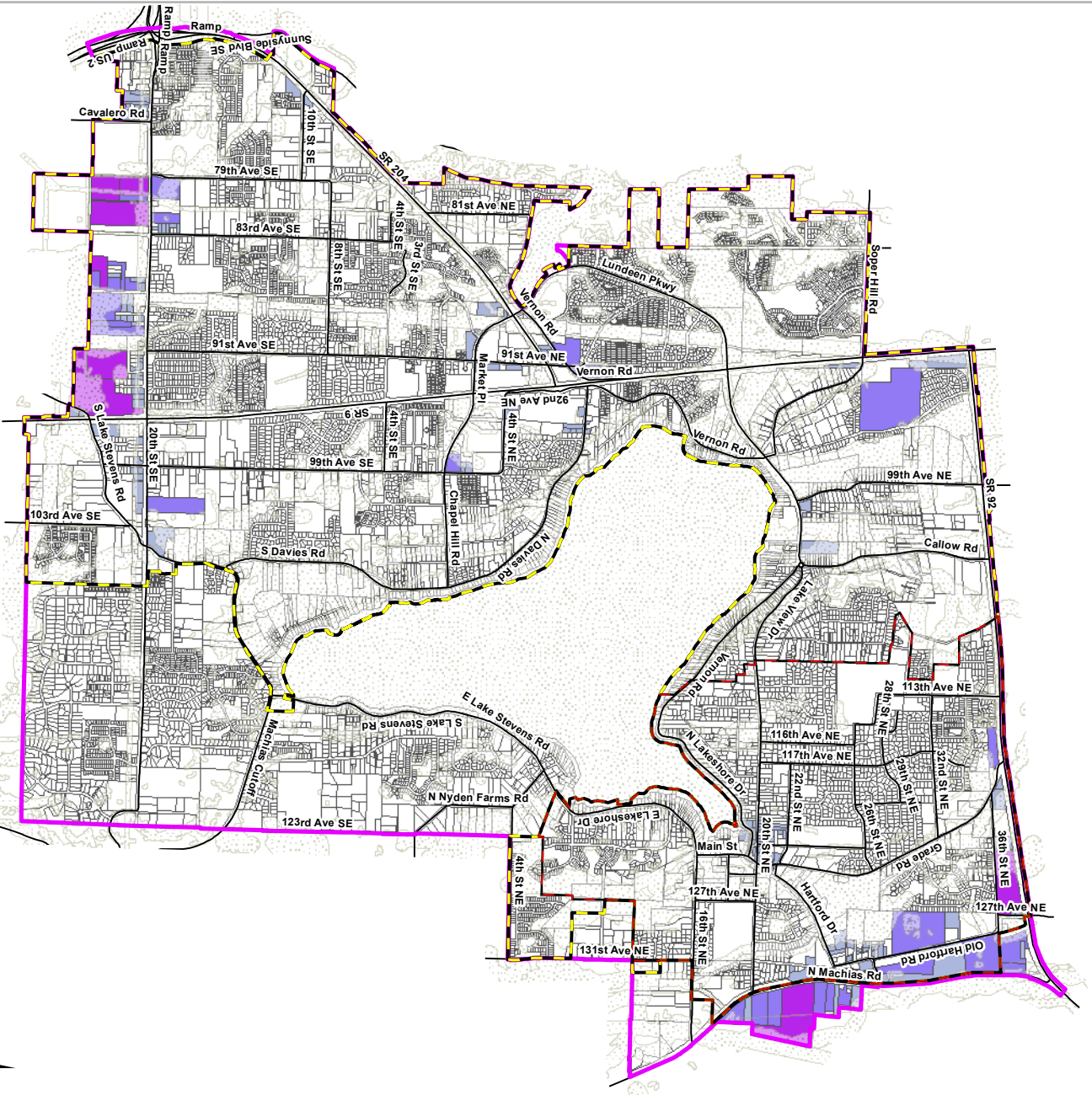










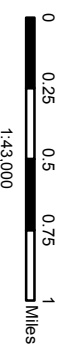
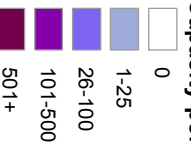


## Legend

- UGA Boundary
- City Boundary 2002
- Current City Boundary
- Major Roads
- Critical Areas, Buffers and Easements

Capacity estimates are calculated based on parcel area not shaded by the Critical Area and Easements Layer. Capacities of individual parcels are generalized into low-to-high color ranges for map display purposes only. Exact capacity values for individual parcels are available upon request.

## Additional Employment Capacity per Parcel



**Snohomish County**  
**Final BLR 12/27/2012**  
 Planning and Development Services  
 3000 Rockefeller Ave.  
 Everett, WA 98201

All maps, data, and information set forth herein ("Data"), are for illustrative purposes only and are not to be considered an official citation to, or representation of, the Snohomish County Code. Amendments and updates to the Data, together with the Data, are subject to change without notice. Snohomish County makes no representation or warranty concerning the content, accuracy, currency, completeness or quality of the Data contained herein and expressly disclaims any warranty of merchantability or fitness for any particular purpose. All persons accessing or otherwise using this Data assume all responsibility for use of the Data and agree to hold Snohomish County harmless from and against any damages, loss, claim or liability arising out of any error, defect or omission contained within said Data. Washington State Law, RCW 42.56.030, prohibits the use of any data for commercial purposes and, thus, no commercial use may be made of any Data comprising lists of individuals contained herein.