

R. 10 E.

R. 11 E.

R. 12 E.

R. 13 E.

T. 33 N.

T. 32 N.

T. 31 N.

T. 30 N.

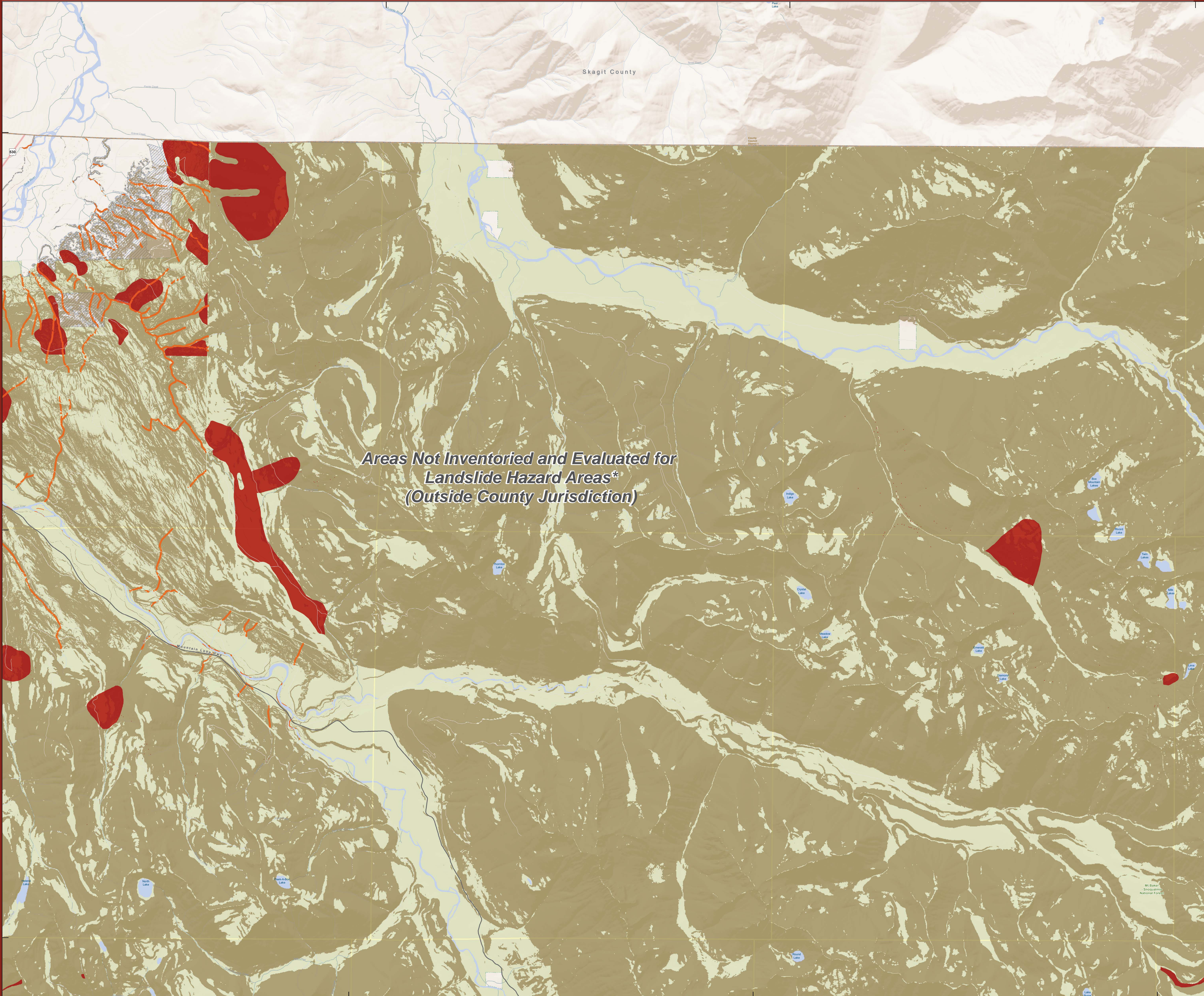
R. 10 E.

R. 11 E.

R. 12 E.

R. 13 E.

Snohomish County
 Critical Area Regulations Update
SNOHOMISH COUNTY
GEOLOGIC HAZARDS
LANDSLIDE HAZARD AREAS
QUAD 4 August 10, 2016



*Areas Not Inventoried and Evaluated for
 Landslide Hazard Areas*
 (Outside County Jurisdiction)*

Legend

- Airports
 - Police Stations
 - Fire Stations
 - Hospitals
 - High Schools
 - Middle Schools
 - Elementary Schools
 - Colleges
 - Solid Waste Transfer Sites
 - Mountain Peaks
 - Section Grid
 - Townships
 - Urban Growth Boundary
 - Municipal Urban Growth Boundary
 - City Boundary
 - County Boundary
 - WA DOT Ferry Routes
 - Railway
 - Waterbody
 - County Park
 - County Trail
 - Tulalip Indian Reservation Boundary
 - Stillaguamish Indian Reservation Boundary
 - U. S. National Forest Land
- Potential Landslide Hazard Areas**
- Coastal Areas Susceptible to Undercutting
 - Area Susceptible to Basal Undercutting
 - Erodible Geology / Steep Slope Intersect
 - Known Landslides
 - Landslide Hazard Areas*
 - Steep Slopes >33% (1999 10-Meter DEM, 2009 6-Foot DEM, 2014 Sub-meter DEM)
- The information on this map is based on slopes that may meet the definition of landslide hazard areas as adopted by Amended Ordinance No. 15-034 on September 10, 2015, and effective November 1, 2015. Data sets including elevation values, slope angles and steep slopes over 30 % were utilized in the creation of this map. Limitations on the available geologic data may affect the accuracy of the map. Therefore, this map shows potential landslide hazard areas. The landslide areas depicted on this map need to be verified by the end user.
- To determine which regulations apply to properties within shoreline jurisdiction, please refer to SCC 30.67.060(1), which provides: "Critical areas located within shoreline jurisdiction are subject to the regulations contained in chapters 30.62A, 30.62B and 30.62C SCC as adopted by Amended Ordinance No. 06-061 on August 1, 2007 and Amended Ordinance No. 07-005 adopted on February 21, 2007, except as modified by SCC 30.67.060(2)." These regulations can be found on the PDS website. Please contact Planning & Development Services Permit Center at (425) 388-3311 for help in determining if your property is within a shoreline jurisdiction area and to determine which regulations apply to your property.

Source Data:

- Snohomish County Landslide Hazard Areas
Snohomish County PDS GIS/PW SWM
Created December 2015
- Snohomish County Landslide Inventory
WSDOT, GeoEngineers and SnoCo PUD
Digitized by Snohomish County PDS GIS
Created March 2015
- Landslides 1:24,000 and 1:100,000
Washington State Department of Natural Resources,
Geology and Earth Resources Division
Last updated 2010
- DNR Mapped Landslides
Washington State Department of Natural Resources,
Geology and Earth Resources Division
Last updated 2014
- DNR Watershed Analysis Landslide Compilation
Washington State Department of Natural Resources,
Geology and Earth Resources Division
Last updated 2014
- DNR Forest Practices Landslide Inventory
Washington State Department of Natural Resources,
Forest Practices Division
Last Updated 2008
- Puget Sound Landforms and Feeder Bluffs
Washington State Department of Ecology
Coastal Geologic Services
Last Updated 2013
- Coastal Zone Atlas of Washington
Washington State Department of Ecology
Shorelands and Coastal Zone Management Program
Original Publish Date 1978-1980
Date Digitized to GIS 2004



SNOHOMISH COUNTY DATA and MAP DISCLAIMER

All maps, data, and information set forth herein ("Data"), are for illustrative purposes only and are not to be considered an official citation to, or representation of, the Snohomish County Code. Amendments and updates to the Data, together with other applicable County Code provisions, may apply which are not depicted herein. Snohomish County makes no representation or warranty concerning the content, accuracy, currency, completeness or quality of the Data contained herein and expressly disclaims any warranty of merchantability or fitness for any particular purpose. All persons accessing or otherwise using this Data assume all responsibility for use thereof and agree to hold Snohomish County harmless from and against any damages, loss, claim or liability arising out of any error, defect or omission contained within said Data. Washington State Law, Ch. 42.56 RCW, prohibits state and local agencies from providing access to lists of individuals intended for use for commercial purposes and, thus, no commercial use may be made of any Data comprising lists of individuals contained herein.

Parcel lines and designation boundaries are adjusted to the Snohomish County Assessor Integrated Land Records Parcel Data Base as of November 2012.

This map is a graphic representation applied from the Snohomish County Geographic Information System. It does not represent survey accuracy. This map is based on the best available information as of the date shown on the map.

