

PUBLIC WASTEWATER SYSTEMS

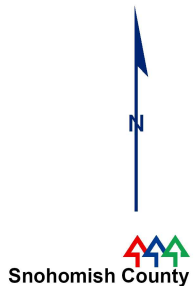
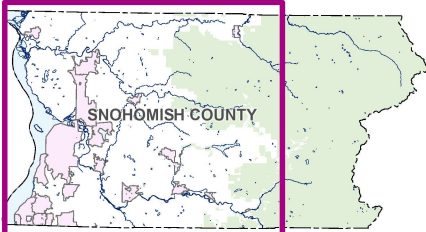
Snohomish County Capital Facilities Inventory Effective Date: 01-09-2021

SNOHOMISH COUNTY DATA and MAP DISCLAIMER

All maps, data, and information set forth herein ("Data"), are for illustrative purposes only and are not to be considered an official citation to, or representation of, the Snohomish County Code. Amendments and updates to the Data, together with other applicable County Code provisions, may apply which are not depicted herein. Snohomish County makes no representation or warranty concerning the content, accuracy, currency, completeness or quality of the Data contained herein and expressly disclaims any warranty of merchantability or fitness for any particular purpose. All persons accessing or otherwise using this Data assume all responsibility for use thereof and agree to hold Snohomish County harmless from and against any damages, loss, claim or liability arising out of any error, defect or omission contained within said Data. Washington State Law, Ch. 42.56 RCW, prohibits state and local agencies from providing access to lists of individuals intended for use for commercial purposes and, thus, no commercial use may be made of any Data comprising lists of individuals contained herein.

FACILITIES AND DISTRICTS

- Sewage Treatment Plant
- Sewerline Diameter less than 12 Inches
- Sewerline Diameter greater than 12 Inches and less than 24 Inches
- Sewerline Diameter greater than 24 Inches and less than or equal to 84 Inches
- The Consolidated Borough of Quil Ceda Village
- Urban Growth Area Boundary
- Incorporated City Boundary
- U. S. National Forest Land
- Alderwood Water and Wastewater Agreement Area
- Cross Valley Agreement Area
- Municipal District
- Special Purpose District
- Tribal District
- Unclaimed / Alderwood Agreement Area
- Unclaimed Service Area



SNOHOMISH COUNTY CAPITAL FACILITIES INVENTORY

FIGURE 7