

# RURAL CLUSTER SUBDIVISIONS

## NORTH COUNTY

Filed December 12, 1996 - January 22, 2025  
(Excludes Short Subdivisions)

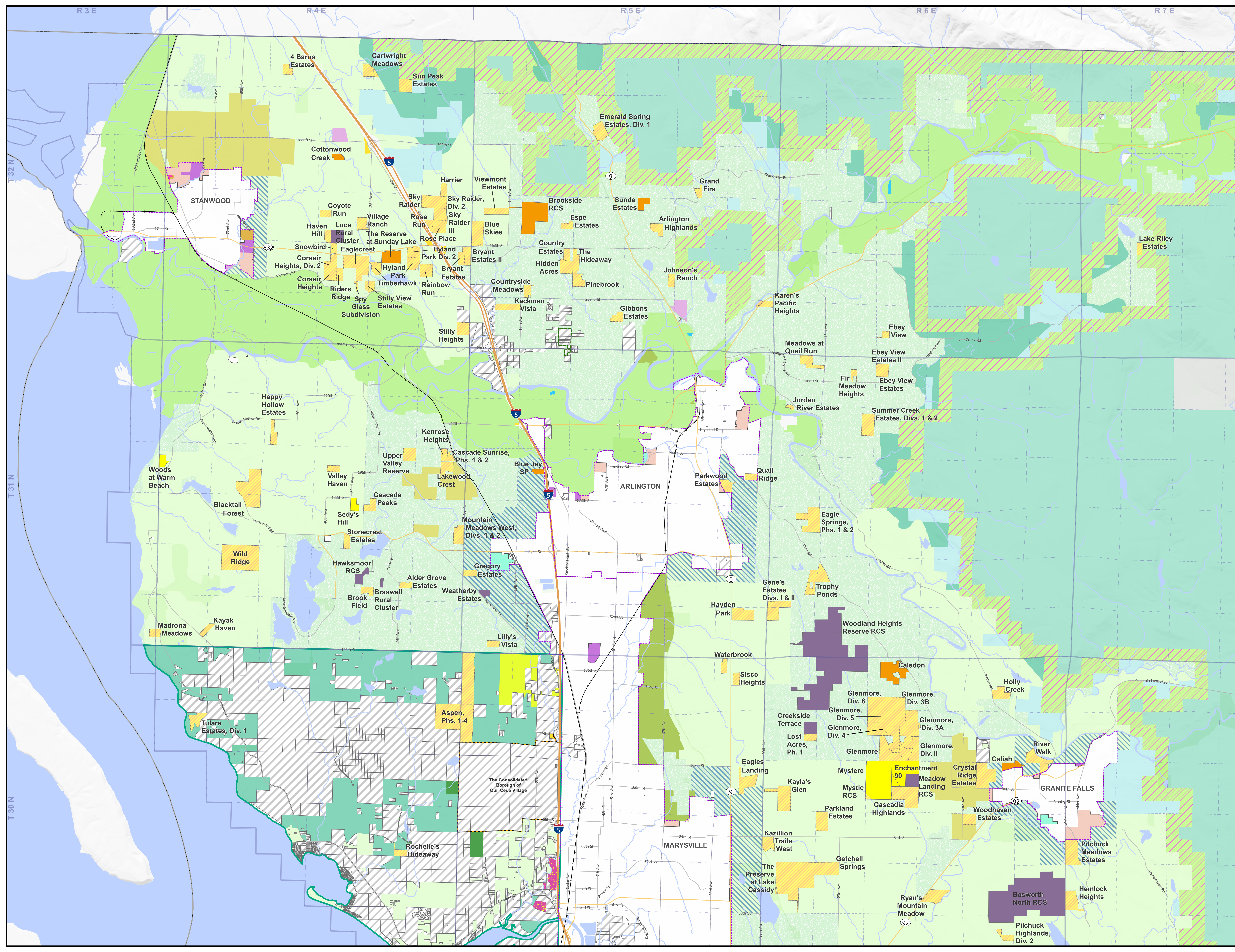
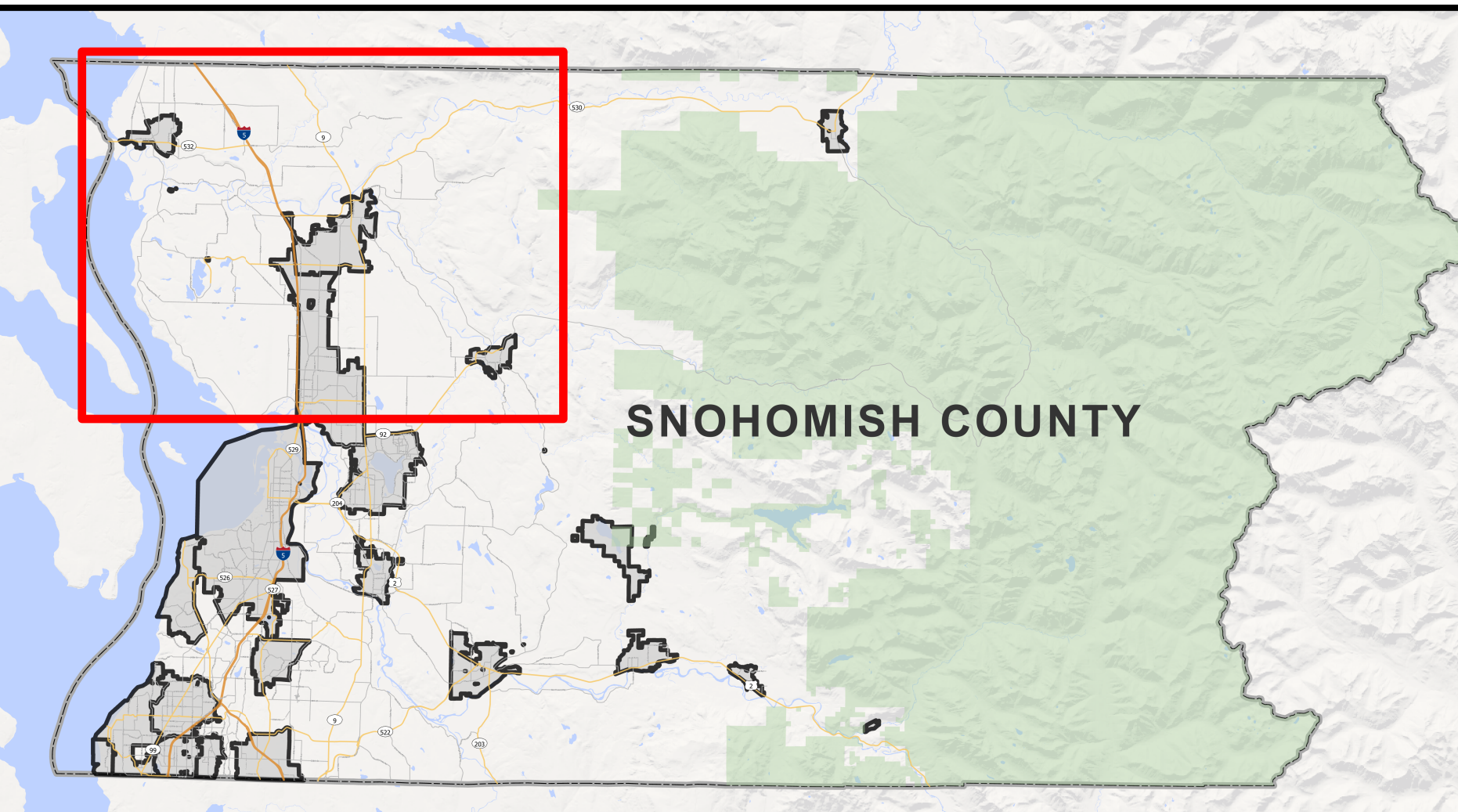
### Rural Cluster Subdivisions by Status as of 2024

- New Recordings 2020-2024
  - Recorded
  - Preliminary Approval
  - Pending
- Selected GPP Designations**
- Commercial Forest
  - Commercial Forest-Forest Transition Area
  - Local Commercial Farmland
  - Low Density Rural Residential (1 DU/20 Acres)
  - Local Forest
  - National Forest (Includes Some Private and Non-Federal Public Lands)
  - Public/Institutional
  - Riverway Commercial Farmland
  - Reservation Commercial
  - Rural Freeway Service
  - Rural Industrial
  - Recreational Land
  - Rural Residential-10 (1 DU/10 Acres)
  - Rural Residential-10 Resource Transition (1 DU/10 Acres)
  - Rural Residential-5 (1 DU/5 Acres)
  - Rural Residential-5 (1 DU/5 Acres Basic)
  - Upland Commercial Farmland
  - Urban Commercial
  - Urban Industrial
  - Urban Low Density Residential
  - Urban Medium Density Residential
  - Rural Urban Transition Area

- Other**
- County Boundary
  - Urban Growth Area Boundary
  - Incorporated City Boundary
  - Tulalip Indian Reservation Boundary
  - Stillaguamish Indian Reservation Boundary
  - Tribal Trust Land
  - Waterbody
  - Watercourse
  - Interstate
  - State Route
  - Arterial

### SNOHOMISH COUNTY DATA and MAP DISCLAIMER

All maps, data, and information set forth herein ("Data"), are for illustrative purposes only and are not to be considered an official citation to, or representation of, the Snohomish County Code. Amendments and updates to the Data, together with other applicable County Code provisions, may apply which are not depicted herein. Snohomish County makes no representation or warranty concerning the content, accuracy, currency, completeness or quality of the Data contained herein and expressly disclaims any warranty of merchantability or fitness for any particular purpose. All persons accessing or otherwise using this Data assume all responsibility for use thereof and agree to hold Snohomish County harmless from and against any damages, loss, claim or liability arising out of any error, defect or omission contained within said Data. Washington State Law, Ch. 42.56 RCW, prohibits state and local agencies from providing access to lists of individuals intended for use for commercial purposes and, thus, no commercial use may be made of any Data comprising lists of individuals contained herein.



R3E R4E R5E R6E R7E  
T32N T31N T30N