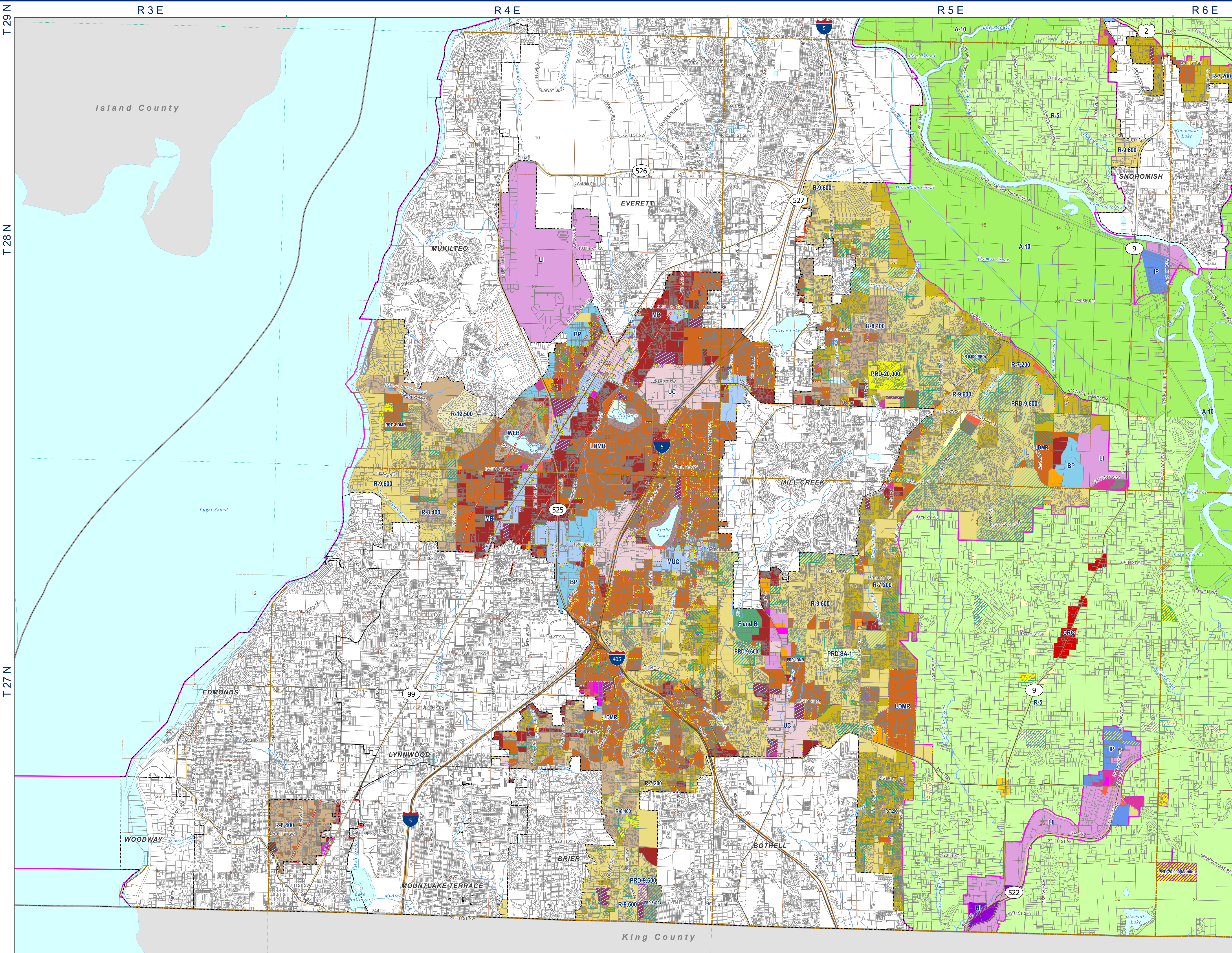


Quadrangle 1 Snohomish County ZONING



- | | |
|---|--|
| F Forestry | PCB Planned Community Business |
| F and R Forestry and Recreation | CB Community Business |
| SA-1 Suburban Agriculture-1 Acre | GC General Commercial |
| A-10 Agriculture-10 Acre | RB Rural Business |
| RRT-10 Rural Resource Transition-10 Acre | CRC Clearview Rural Commercial |
| R-5 Rural-5 Acre | MUC Mixed-Use Corridor |
| RD Rural Diversification | IP Industrial Park |
| RC Rural Conservation | PIP Planned Industrial Park |
| R-20,000 Residential 20,000 sq. ft. | PIP Planned Industrial Park |
| R-12,500 Residential 12,500 sq. ft. | RI Rural Industrial |
| R-9,600 Residential 9,600 sq. ft. | LI Light Industrial |
| R-9,600(PR) Residential 9,600 sq. ft. (Planned Residential Development) | HI Heavy Industrial |
| R-8,400 Residential 8,400 sq. ft. | PRD SA-1 Planned Residential Development Suburban Agriculture-1 Acre |
| R-8,400(PR) Residential 8,400 sq. ft. (Planned Residential Development) | PRD-20,000 Planned Residential Development 20,000 sq. ft. |
| R-7,200 Residential 7,200 sq. ft. | PRD-20,000(Mobile) Planned Residential Development (Mobile) 20,000 sq. ft. |
| R-7,200(PR) Residential 7,200 sq. ft. (Planned Residential Development) | PRD-12,500(Mobile) Planned Residential Development (Mobile) 12,500 sq. ft. |
| WFB Waterfront Beach | PRD-9,600 Planned Residential Development 9,600 sq. ft. |
| PRUD Planned Residential Unit Devl. | PRD-8,400 Planned Residential Development 8,400 sq. ft. |
| T Townhouse | PRD-7,200 Planned Residential Development 7,200 sq. ft. |
| LDMR Low Density Multiple Residential | PRD-7,200(Mobile) Planned Residential Development (Mobile) 7,200 sq. ft. |
| LDMR(PR) Low Density Multiple Residential (Planned Residential Development) | PRD-LDMR Planned Residential Development Low Density Multiple Residential |
| MR Multiple Residential | PRD-MR Planned Residential Development Multiple Residential |
| MR(PR) Multiple Residential (Planned Residential Development) | PRD-CB Planned Residential Development Community Business |
| MHP Mobile Home Park | |
| RFS Rural Freeway Service | |
| NB Neighborhood Business | |

- | | |
|---|---|
| (PRD) Overlay for Planned Residential Development | TDR - RA (Transfer of Development Rights - Receiving Area) |
| PRD - Zoning designation for Planned Residential Development | Multi-Family Code Amendments and TDR Requirements (SCC 30.23) |
| PRD - Zoning designation for Planned Residential Development (Mobile) | ORV Overlay (Off-Road Vehicle) |
- | | | |
|--------------|--|---------------|
| Water Bodies | Arterial | Water Courses |
| Tribes | Mount Baker-Snoqualmie National Forest | UGA Boundary |
| WSDOT | Consolidated Borough of Quil Ceda Village | |
| Cities | Tribes Reservation Boundary (Boundary Not Intended to Display Reservation Tidelands) | |

All maps, data, and information set forth herein ("Data"), are for illustrative purposes only and are not to be considered an official title, or representation of the Snohomish County Code. Amendments and updates to the Data, together with other applicable County Code provisions, may apply which are not depicted herein. Snohomish County makes no representation or warranty concerning the content, accuracy, currency, completeness or quality of the Data contained herein and expressly disclaims any warranty of merchantability or fitness for any particular purpose. All persons accessing or otherwise using this Data assume all responsibility for use thereof and agree to hold Snohomish County harmless from and against any damages, loss, claim or liability arising out of any error, defect or omission contained within said Data. Washington State Law, Ch. 42.56 RCW, prohibits state and local agencies from providing access to lists of individuals intended for use for commercial purposes and, thus, no commercial use may be made of any data comprising lists of individuals contained herein. This product is a graphic representation and does not represent survey accuracy. Property lines are generalized for illustrative purposes only. The zoning designations on this map were compiled at a scale of 1:24,000. This map is NOT the official zoning map. The official county zoning maps are on file with the Snohomish County Department of Planning and Development Services, 3000 Rockefeller, Everett, Washington. PDS recommends that you verify the data contained on this map prior to initiating any development activity. For more information, call (425) 386-3311. Refer to Snohomish County Code SCC 30.21 020 for Zoning Definitions.

FOR THE PURPOSES OF LAND USE APPLICATION REVIEW, FINAL DETERMINATION OF ZONING DESIGNATIONS WILL BE MADE FROM OFFICIAL ZONING MAPS/GEO-DATASET.

Click here for Full County Zoning Map

0 2,000 4,000 6,000 8,000 Feet

Date Produced: January 22, 2026

Source: W:\p\g\carto\Zoning_QUAD_MXD\Current_QUADmap_APRX\ZoningQuadMaps.aprx, [ZoneQUAD Layout]