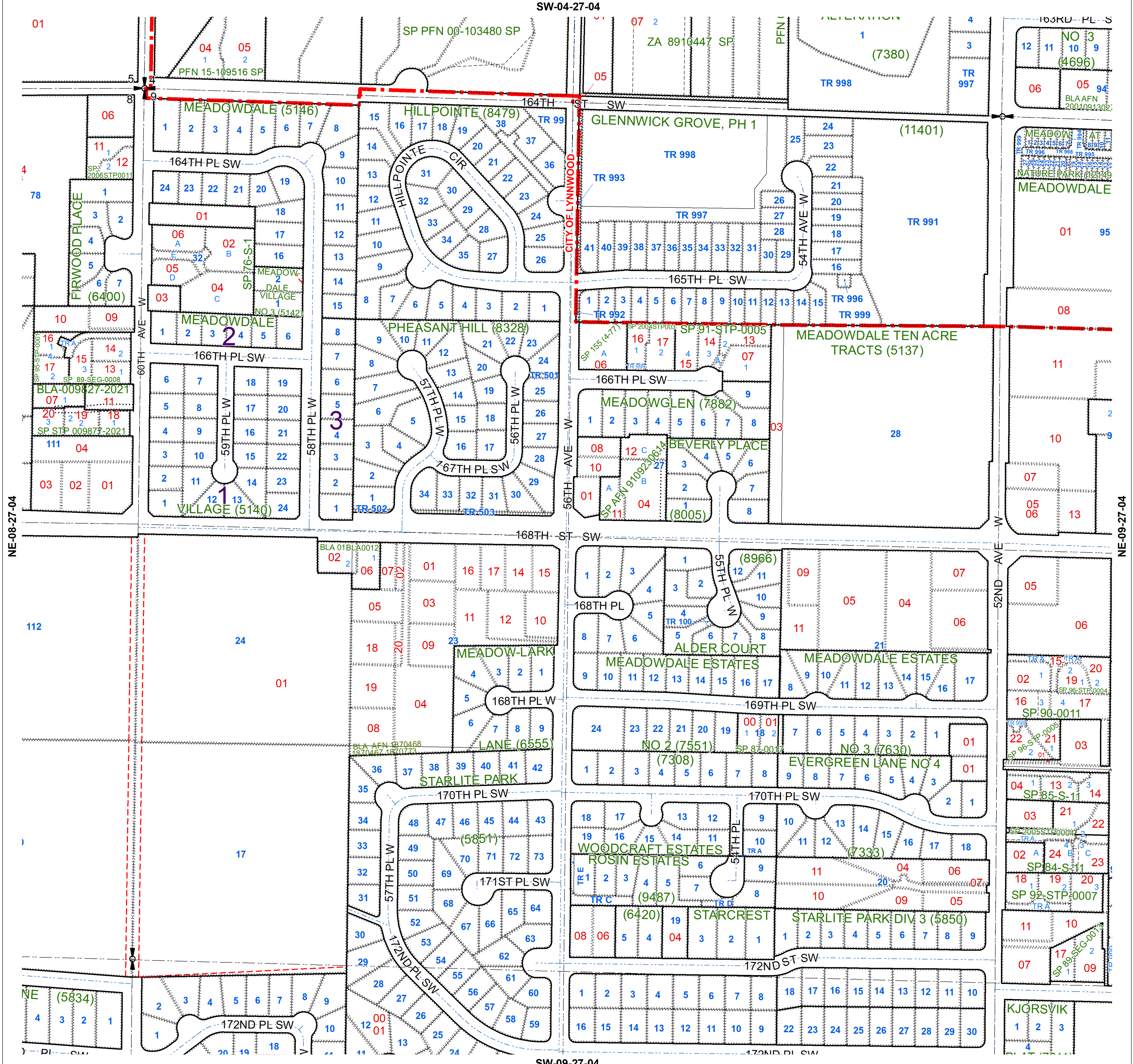
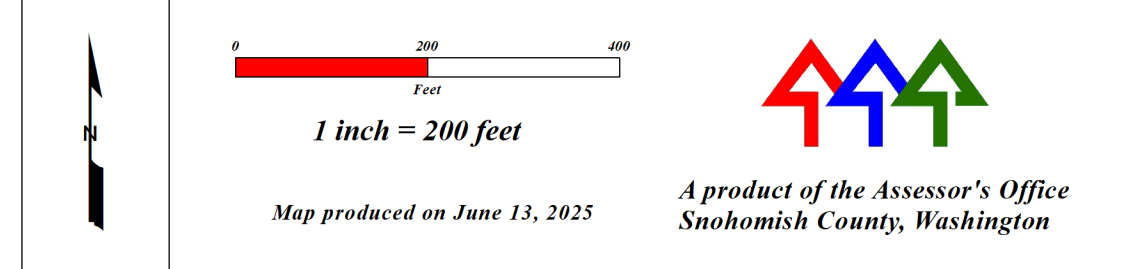
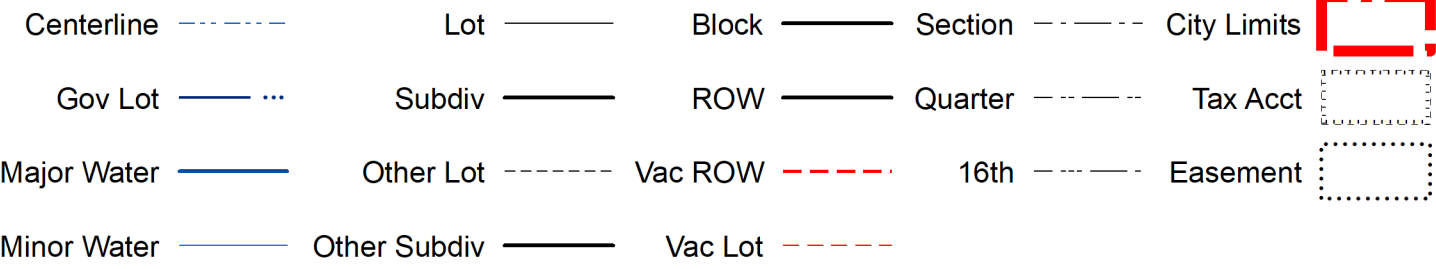
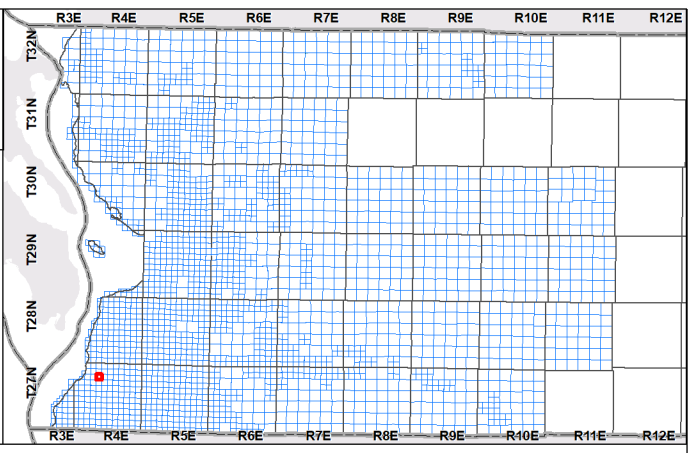


QUARTER **NW** SECTION **9** TOWNSHIP N.W.B.L. **27** RANGE E.W.M. **4**

ALL MAPS, DATA, AND INFORMATION SET FORTH HEREIN ("DATA"), ARE FOR ILLUSTRATIVE PURPOSES ONLY AND ARE NOT TO BE CONSIDERED AN OFFICIAL CITATION TO, OR REPRESENTATION OF, THE SNOHOMISH COUNTY CODE. AMENDMENTS AND UPDATES TO THE DATA, TOGETHER WITH OTHER APPLICABLE COUNTY CODE PROVISIONS, MAY APPLY WHICH ARE NOT DEPICTED HEREIN. SNOHOMISH COUNTY MAKES NO REPRESENTATION OR WARRANTY CONCERNING THE CONTENT, ACCURACY, CURRENCY, COMPLETENESS OR QUALITY OF THE DATA CONTAINED HEREIN AND EXPRESSLY DISCLAIMS ANY WARRANTY OF MERCHANTABILITY OR FITNESS FOR ANY PARTICULAR PURPOSE. ALL PERSONS ACCESSING OR OTHERWISE USING THIS DATA SHALL ASSUME ALL RESPONSIBILITY FOR USE THEREOF AND AGREE TO HOLD SNOHOMISH COUNTY HARMLESS FROM AND AGAINST ANY DAMAGES, LOSS, CLAIM OR LIABILITY ARISING OUT OF ANY ERROR, DEFECT OR OMISSION CONTAINED WITHIN SAID DATA. WASHINGTON STATE LAW, RCW 42.56.030 PROHIBITS STATE AND LOCAL AGENCIES FROM PROVIDING ACCESS TO LISTS OF INDIVIDUALS INTENDED FOR USE FOR COMMERCIAL PURPOSES. A COMMERCIAL PURPOSE INCLUDES ANY BUSINESS ACTIVITY INTENDED TO GENERATE PROFITS, BY PROCEEDING AND ACCESSING THIS DATA, YOU AGREE AND REPRESENT THAT YOU WILL NOT USE ANY LISTS OF INDIVIDUALS, OR DATA FROM WHICH SUCH LISTS MAY BE COMPILED, FOR ANY COMMERCIAL PURPOSE.



SW-04-27-04

SW-09-27-04